

# Schedule Delay Analysis

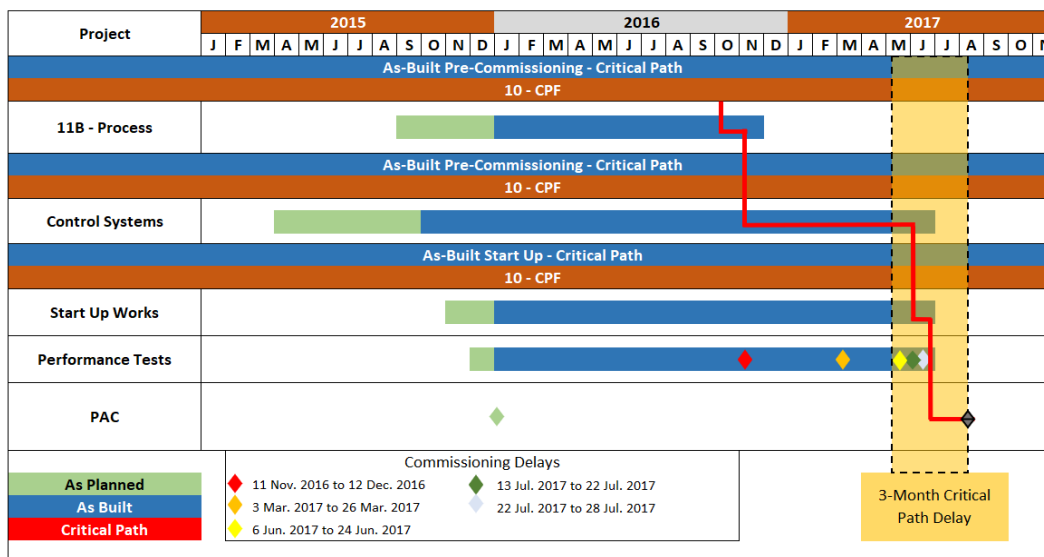
Construction delay claims are perhaps the most common and misunderstood disputes in the construction industry. GlassRatner's (formerly Interface Consulting) scheduling experts have advanced hands-on knowledge of Critical Path Method (CPM) schedule analysis and extensive practical experience in the contract claims environment involving delay, disruption, and acceleration issues. We assist clients with schedule analysis and quantification of actual and liquidated damages related to delays, disruptions, and acceleration.

GlassRatner provides contemporaneous and forward-looking CPM schedule analysis to facilitate the early resolution of schedule-related changes as well as forensic delay analysis for the preparation of affirmative and defense delay claims. Our professionals also serve as scheduling experts testifying in US federal and state courts and numerous arbitration forums.

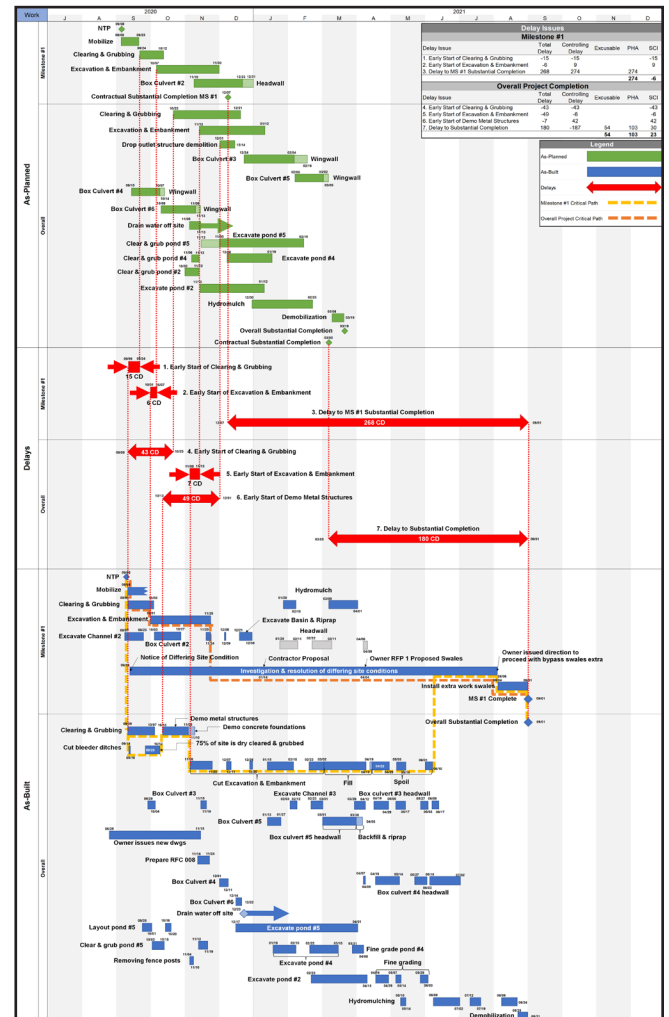
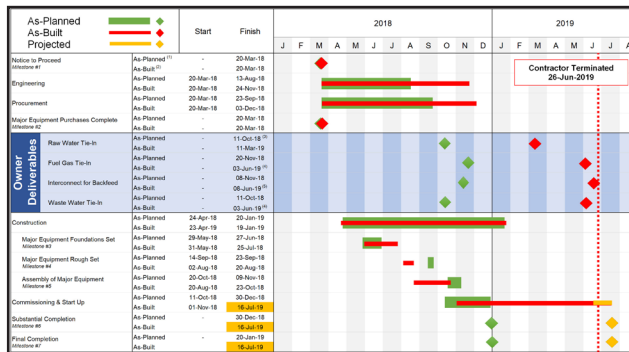
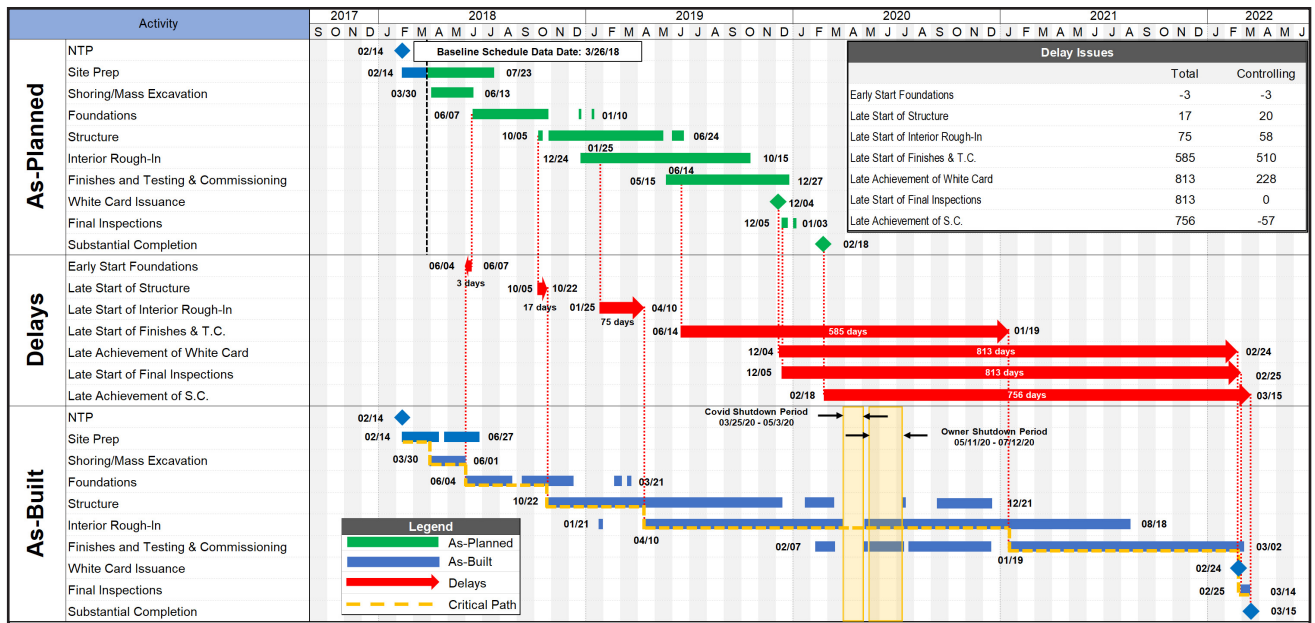
## Expert Services

GlassRatner provides a variety of expert services to assist clients with all facets of scheduling and project management, from the planning and implementation of CPM scheduling to forensic schedule delay analysis and damage quantification. GlassRatner assists contractors, owners, and construction managers

- Contract Scheduling Specification Preparation
- Verification of Schedule Activity Relationships and Schedule Integrity
- Baseline Schedule Review and Contract Compliance Evaluation
- Contemporaneous Schedule Delay Analysis
- Identification of Compensable and Non-compensable Schedule Delay Issues
- Allocation of Schedule Delay Responsibility
- Quantification of Actual Damages, Liquidated Damages, and Potential Early Completion Bonus
- Recovery Schedule Evaluation



*GlassRatner has extensive experience handling construction delay claims and our construction management experts are skilled at tailoring our schedule analysis approach to suit a project's needs and constraints.*



## Analysis Methodologies

GlassRatner's scheduling experts specialize in CPM schedule analysis by means of the following industry-recognized methodologies:

- Time Impact Analysis
- Collapsed As-Built
- Impacted As-Planned
- As-Planned vs. As-Built
- Windows Analysis or Contemporaneous Period Analysis

The selection of a particular schedule analysis methodology depends on the project facts, the nature of the events being analyzed, the nature and extent of available as-built information, and the available progress data, and may vary from project to project.